



RSD SPORTSTER REAR SETS INSTALLATION



PRODUCT DESCRIPTION

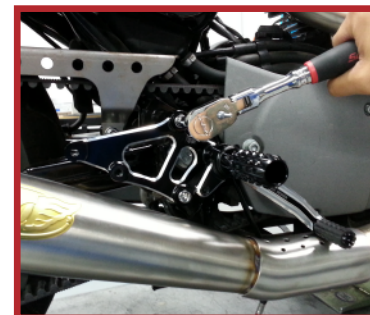
2004 - 2013 XL SPORTSTER RSD REAR SETS

0035-1132

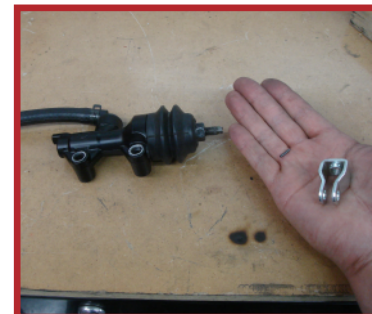
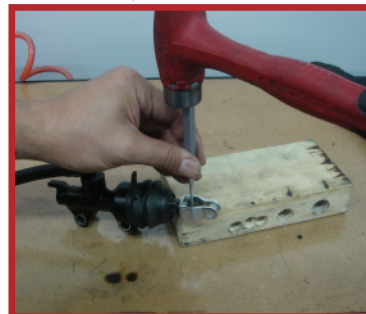
For questions pertaining to the installation of this product, please contact the Performance Machine technical department at 1-800-479-4037. This product is manufactured in the USA by Performance Machine LLC.

RSD SPORTSTER RIGHT REAR SET INSTALLATION

1. Turn your motorcycle off, place securely on a lift or side stand.
2. Remove the stock right side controls, disconnect the brake line from the master cylinder and remove the master cylinder from the controls. Some models require removal of the passenger peg mounts.
NOTE: Consult your HD service manual for specific instructions.
3. Install the rear set backing plate using the supplied spacers and bolts. Torque to 45 -50 ft-lbs.
NOTE: Apply high strength thread locking compound to all bolts.



4. Remove the stock clevis from the master cylinder.
NOTE: Consult your HD service manual for specific instructions.

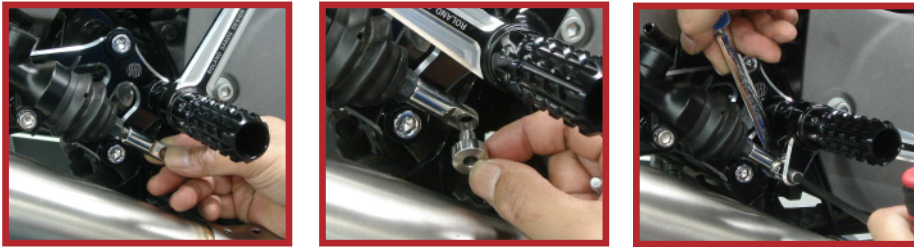


5. Mount the master cylinder and supplied reservoir bracket using the included hardware. The reservoir bracket will be pinched between the rear mount on the master cylinder and the backing plate.
NOTE: Apply high strength thread locking compound to all bolts.



RSD SPORTSTER RIGHT REAR SET INSTALLATION

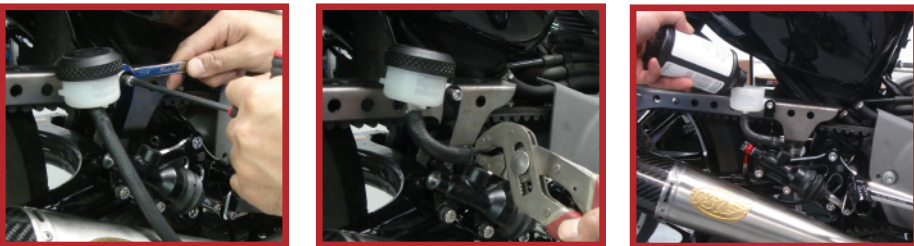
6. Install the new clevis to the master cylinder, insert the supplied step spacer into the clevis and mount it to the brake pedal using the supplied hardware. Torque to 17 - 22 ft-lbs



7. Mount the reservoir to the mount, run the hose to the master cylinder and trim to length. Install the rear brake line and bleed the rear brake. Check clearance between the brake pedal and exhaust system. Adjust height if needed

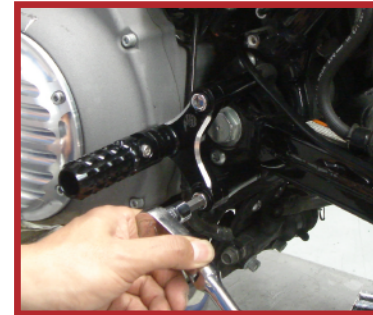
NOTE: Make sure the hose does not bind, kink or touch the exhaust system.

An aftermarket brake line is required when installing rear sets.



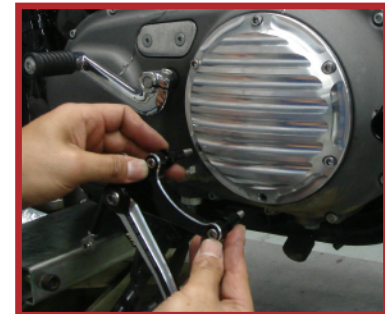
RSD SPORTSTER LEFT REAR SET INSTALLATION

1. Remove the stock controls including shifter assembly and passenger peg mount (if equipped)
2. Bolt the rear set peg mount using the supplied hardware and spacers. Torque to 45 - 50 ft-lbs



3. Remove the two derby cover bolts at 6 o'clock and 8 o'clock positions. Install the backing plate using the provided hardware and spacers. Torque to 90 - 100 in-lbs

NOTE: Apply medium strength thread locking compound to all bolts.



4. Install the shifter knuckle to the shaft, secure the shift rod to the knuckle. Adjust the shift lever height and tighten the jam nuts.

