



*Figure Machine*

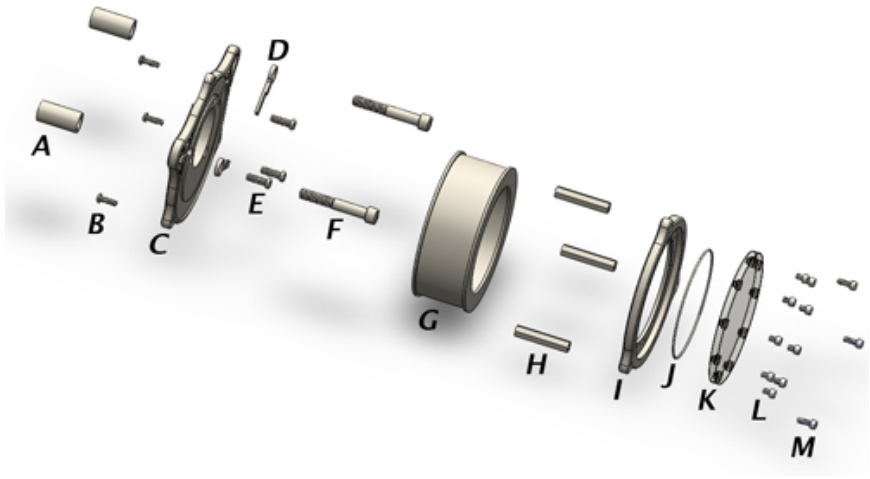
9208 Venture Ct – C9  
Manassas Park VA 20111  
Info@FigureMachine.com  
www.FigureMachine.com

## *Installation Manual*



*TCFLOW VISION 5*

# TCFLOW VISION 5 EXPLODED VIEW



- A - BREATHER SPACER (2)
- B - BOLT; 10-32 x 1/2" BUTTON HEAD (3)
- C - BACK PLATE (1)
- D - KEY HOLE CHANNEL (2)
- E - BOLT; 1/4-20 x 1/2" SOCKET HEAD LOW (3)
- F - BREATHER BOLT (2)
- G - K&N FILTER E-3200 (1)
- H - 10-32 x 2" - 5/16" ALUMINUM STANDOFF (3)
- I - FACE PLATE (1)
- J - O-RING (1)
- K - CLEAR WINDOW (1)
- L - BOLT; 10-32 x 1/4" SOCKET HEAD (9)
- M - BOLT; 10-32 x 1/2" SOCKET HEAD (3)

Dear Customer,

Thank you for purchasing *Figure's* TCFLOW VISION 5 Air Cleaner Assembly. This Air Cleaner has been engineered to enhance the performance and appearance for the life of your bike. Proper installation is essential to your overall satisfaction, so please read these instructions before attempting to install. Exercise patience; these instructions are intended to assist even the most mechanically challenged.

Remember, if you are not 100% satisfied with our product, simply return it within 30 days of purchase for a complete refund.

We always love to see installed pictures, so we encourage you to email us your best!

(Send to [Info@FigureMachine.com](mailto:Info@FigureMachine.com))

***Package Contents (see illustration):***

- A - BREATHER SPACER (2)
- B - BOLT; 10-32 x 1/2" BUTTON HEAD (3)
- C - BACK PLATE (1)
- D - KEY HOLE CHANNEL (2)
- E - BOLT; 1/4-20 x 1/2" SOCKET HEAD LOW (3)
- F - BREATHER BOLT (2)
- G - K&N FILTER E-3200 (1)
- H - 10-32 x 2" - 5/16" ALUMINUM STANDOFF (2)
- I - FACE PLATE (1)
- J - O-RING (1)
- K - CLEAR WINDOW (1)
- L - BOLT; 10-32 x 1/4" SOCKET HEAD (9)
- M - BOLT; 10-32 x 1/2" SOCKET HEAD (3)

# TCFLOW VISION 5 Installation

## 1) Remove Stock Filter Assembly

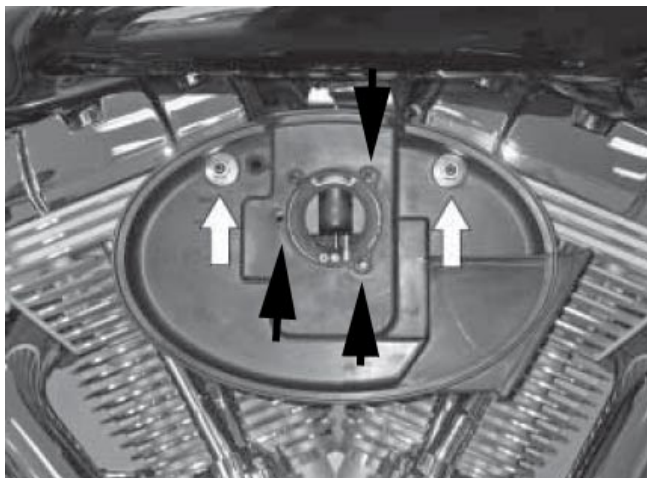
- 1.1) Remove the Allen Cap screw that secures the Filter Cover.



- 1.2) Remove the three bolts that secure the stock filter. Then remove the filter and breather hoses.



- 1.3)** Remove the stock breather bolts and throttle body bolts. Remove the stock breather box. Carefully remove the stock air filter gasket and set aside for later use.

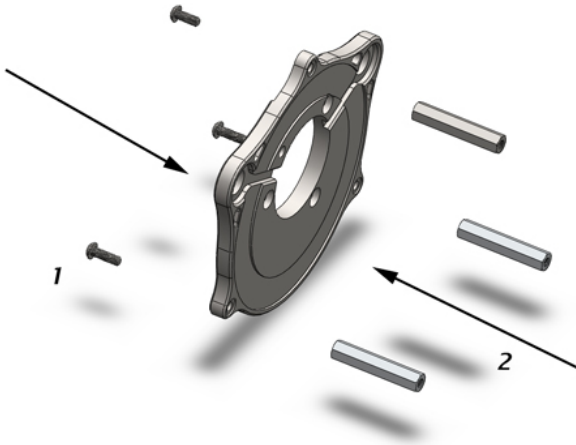


- 1.4)** Some models (Non U.S.) are equipped with an intake valve solenoid. If so equipped, unhook the connector on the back of the stock air cleaner.



## 2) PREPARE TCFLOW VISION 5 BACK PLATE

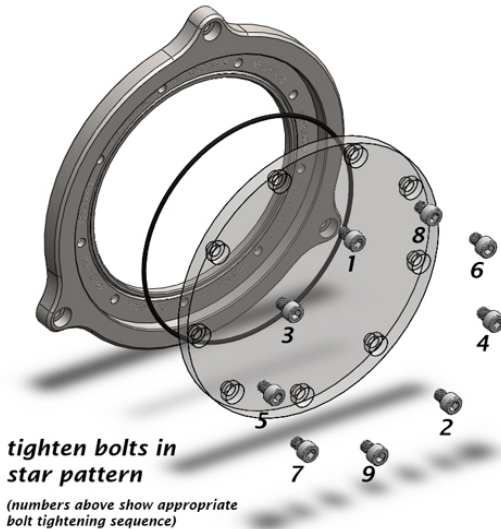
- 2.1) Install the 10-32 x 2" hex standoffs to the backing plate using the button head 10-32 x 1/2" button head bolts.



## 3) PREPARE TCFLOW VISION 5 CLEAR FACE PLATE

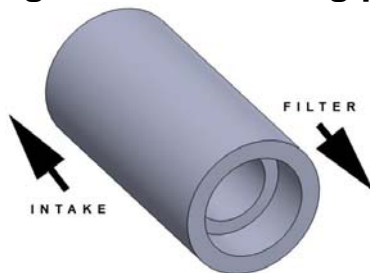
- 3.1) Place the rubber O-ring in the groove in the face plate
- 3.2) Peel the protective sticker paper off of the clear window and place it (countersinks facing outwards) in the relief in the face plate.
- 3.3) **LOOSELY** thread the 10-32 x 1/4" bolts through the window and into the face plate.
- 3.4) With all of the bolts **LOOSELY** installed in the face plate, begin to partially tighten the bolts in the order shown below, repeating until all the

bolts are tight. This will ensure a seal between the O-ring and the window.



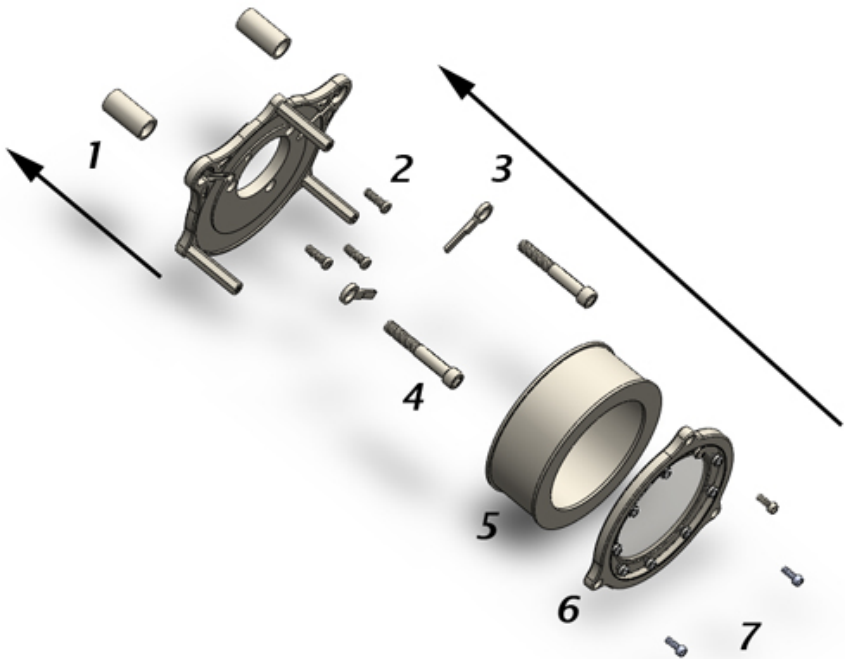
#### 4) INSTALL TCFLOW FILTER ASSEMBLY

- 4.1) Insert the 3  $\frac{1}{4}$ "-20 x  $\frac{3}{4}$ " bolts through the backing plate and then through the stock gasket. **LOOSELY** install the three bolts.
- 4.2) Insert the breather bolts through key hole, the backing plate, and finally through the breather spacers and then finger tighten to the engine. **IMPORTANT: The end of the spacer with relief goes against the backing plate.**



**IMPORTANT: INSTALL ENDS WITH RELIEF AGAINST BACK PLATE**

- 4.3) After all bolts from steps 4.1 and 4.2 have been loosely attached, fully tighten the 3 intake bolts and then the breathers.
- 4.4) Place the K&N filter in the groove of the back plate.
- 4.5) Align the face plate to sit flush against the standoffs
- 4.6) Secure the face plate with the 10-32 x 1/2" socket head bolts.



- 4.7) Stand back and enjoy! Please send any pictures and/or feedback to:  
**info@FigureMachine.com**