



*Figure Machine*

9208 Venture Ct – C9

Manassas Park VA 20111

Info@figuremachine.com

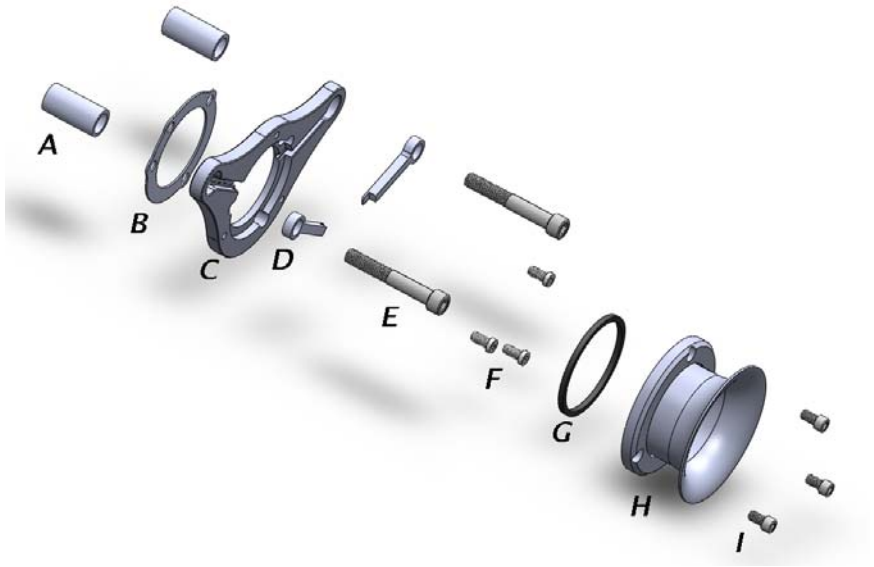
www.FigureMachine.com

## *Installation Manual*



*TCFLOW-STACK*

# TCFLOW-STACK EXPLODED VIEW



- A - BREATHER SPACER (2)
- B - GASKET (STOCK COMPONENT)
- C - BACK PLATE (1)
- D - KEYWAY COVER (2)
- E - BREATHER BOLT (2)
- F - BOLT; ¼-20 x ½" SOCKET HEAD LOW (3)
- G - O-RING (1)
- H - COLLAR AND VELOCITY STACK (1)
- I - BOLT; ¼-20 X 7/16" SOCKET HEAD (3)

Dear Customer,

Thank you for purchasing *Figure's* TCFLOW-STACK Air Cleaner Assembly. This Air Cleaner has been engineered to enhance the performance and appearance of your bike for its entire life. **Proper installation is essential to your overall satisfaction, so please read these instructions before attempting to install.** Exercise patience; these instructions are intended to assist even the most mechanically challenged.

Remember, if you are not 100% satisfied with our product, simply return it within 30 days of purchase for a complete refund.

We always love to see installed pictures, so we encourage you to email us your best!  
(Send to [info@figuremachine.com](mailto:info@figuremachine.com))

***Package Contents (see illustration):***

- A - BREATHER SPACER (2)
- C - BACK PLATE (1)
- D - KEYWAY COVER (2)
- E - BREATHER BOLT (2)
- F - BOLT; ¼-20 x ½" SOCKET HEAD LOW (3)
- G - O-RING (1)
- H - COLLAR AND VELOCITY STACK (1)
- I - BOLT; ¼-20 x 7/16" SOCKET HEAD (3)
- \* - Loctite® RETAINING COMPOUND (.02 oz)

# TCFLOW-STACK Installation

## 1) Remove Stock Filter Assembly

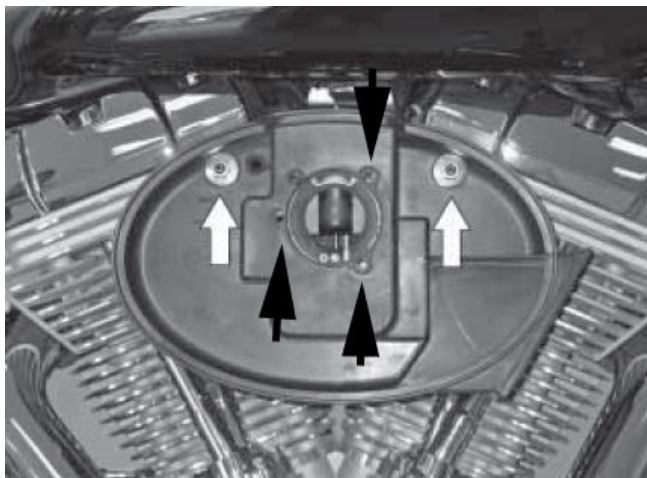
- 1.1) Remove the Allen Cap screw that secures the Filter Cover.



- 1.2) Remove the three bolts that secure the stock filter. Then remove the filter and breather hoses.



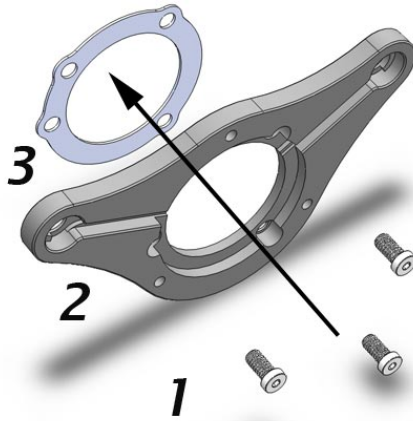
- 1.3)** Remove the stock breather bolts and throttle body bolts. Remove the stock breather box. Carefully remove the stock air filter gasket and set aside for later use.



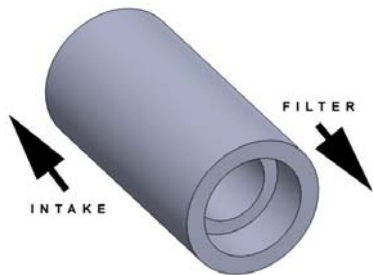
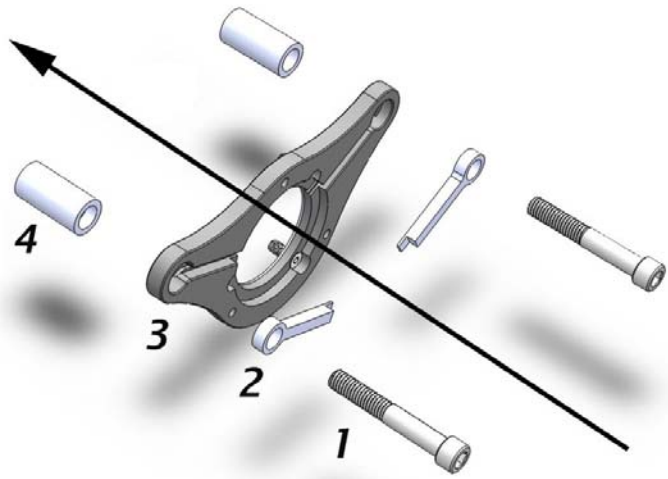
- 1.4)** Some models (Non U.S.) are equipped with an intake valve solenoid. If so equipped, unhook the connector on the back of the stock air cleaner. The connector of this solenoid will need to be attached to the new filter backing plate and a bypass module (not supplied) will need to be installed to prevent a check engine light.
- 1.5)** Some models are equipped with a carbon canister vent line. If so equipped, this hose can be routed to under the bike.

## 2) INSTALL TCFLOW FILTER ASSEMBLY

- 2.1) Insert three ¼"-20 x ½" LOW head bolts through the backing plate and then through the stock gasket (use Loctite on the bolts). Loosely install the bolts to the intake but do not fully tighten.



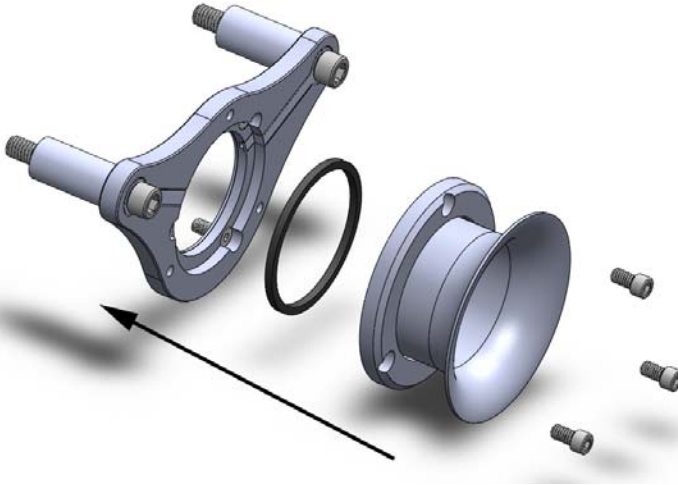
- 2.2) Insert the breather bolts through key hole, the backing plate, and finally through the breather spacers (per the following illustration) and then finger tighten to the engine (use Loctite on the breather bolts). **IMPORTANT: The end of the spacer with relief goes against the backing plate.**



**IMPORTANT: INSTALL ENDS WITH RELIEF AGAINST BACK PLATE**

**2.3)** After all bolts from steps 2.1 and 2.2 have been loosely attached, fully tighten the 3 intake bolts and then fully tighten the breather bolts.

- 2.4)** Place the O-ring in the intake groove of the backing plate. Loosely install the ¼”-20 x 7/16” bolts through the collar and into the backing plate (use Loctite on the bolts).



- 2.5)** Gradually tighten each bolt such that the collar is evenly drawn against the backing plate until all bolts are fully tight and the collar is flat against the backing plate.
- 2.6)** Stand back and enjoy! Please send any pictures and/or feedback to:  
info@figuremachine.com