



CLARITY AIR CLEANER

For Fuel injected models, you must recalibrate the ECM or buy an aftermarket fuelpack from Vance & Hines to properly calibrate your new intake. Failure to do so may result in engine damage.

NOTE: Inserts are required for use with 1993-1999 HD Evolution applications.

To install inserts thread a 3/8-16 bolt through the insert and thread both the bolt and insert completely into the breather hole then remove the 3/8" bolt. Once the inserts are installed you can begin air cleaner installation.

NOTE: Some models may require use of 3/8-16 to 1/2-13 thread reducers (supplied).

1. Turn your motorcycle off. Extinguish all cigarettes and open flames.
2. Remove existing air cleaner and breathers. (Refer to HD owners Manual)
3. Install 2 breathers (9) and backing plate (7) with 2 slotted breather bolts (10) using blue loctite 243, torque to 15 ft. lbs. Install three 1/4-20 bolts (3), torque to 8 ft. lbs.

NOTE: For 08/09 FL models reuse throttle body support bracket as shown in Fig. A

4. Install rubber breather tubes (13/14) as shown in Fig. B. They should fit snugly into the machined recesses
5. Install the secondary plate (8) and ensure that it sits flat and there is no obstruction from the breather tubes below.
6. Install (1,2,5,12,16,17,18) as an assembly with five spacers(11) using five 1/4-20 x 2 1/2 bolts (4) to backing plate (7), torque to 8 ft. lbs.

NOTE: Upon assembly use blue Loctite 243 on the 1/4" fasteners.

NOTE: Make sure the inside of the Lexan window is clean prior to installation. Clean with Plexus if necessary.

7. Go for a ride!

CAUTION:

CLARITY WINDOW IS PERMANENTLY INSTALLED AT THE FACTORY AND SHOULD NOT BE REMOVED OR SERVICED. IF REMOVAL IS NECESSARY CONTACT THE TECH DEPARTMENT FOR SPECIAL SERVICE INSTRUCTIONS. PERFORMANCE MACHINE THE MANUFACTURER IS NOT RESPONSIBLE FOR DAMAGE TO THE CLARITY WINDOW CAUSED BY IMPROPER SERVICE.

USE ONLY LEXAN APPROVED CLEANERS SUCH AS PLEXUS TO CLEAN YOUR CLARITY WINDOW. HARSH CHEMICALS MAY CAUSE DAMAGE.



FIG. A

THROTTLE BODY SUPPORT



FIG. B

CAUTION !!! - INTENDED FOR OFF HIGHWAY USE ONLY. DOES NOT COMPLY WITH EMISSIONS REGULATIONS

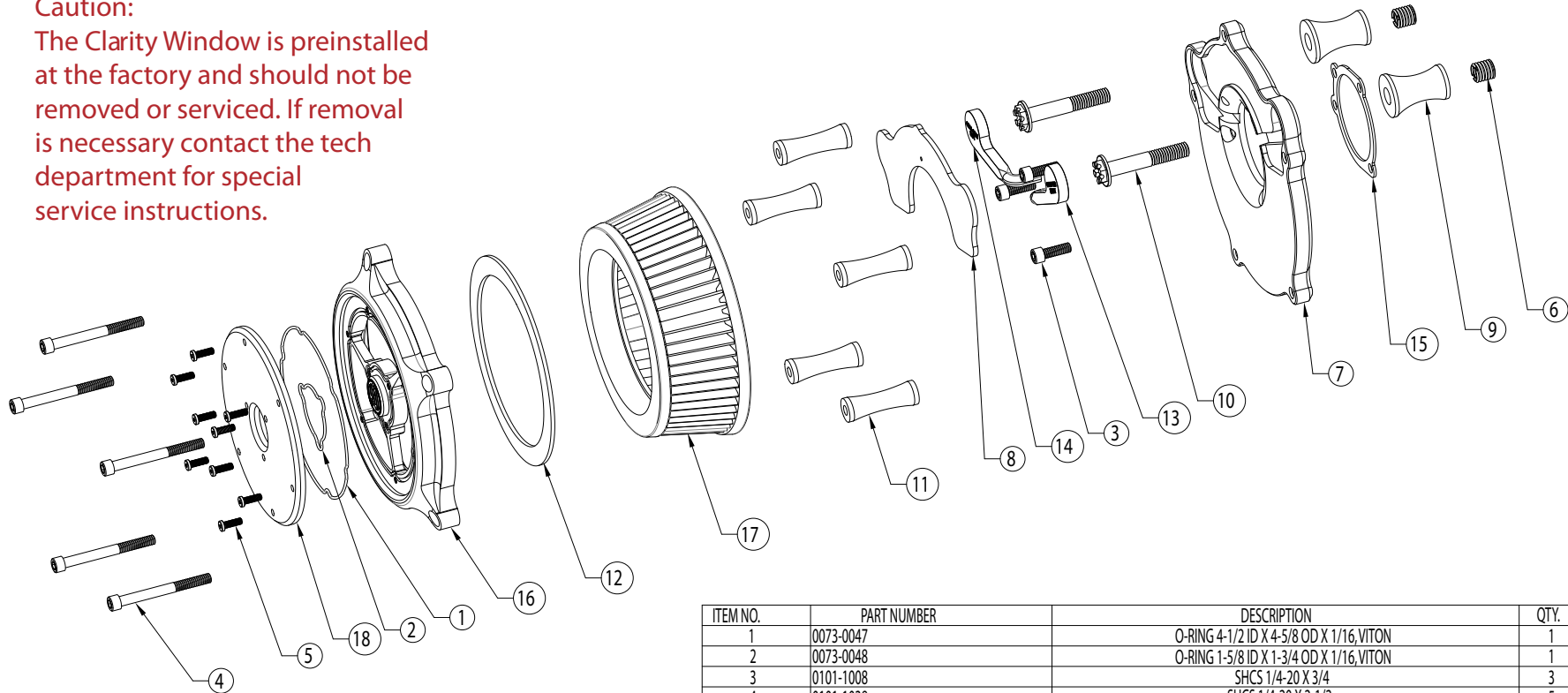
PRODUCT DESCRIPTION	P/N
93-06 Big Twin w/ CV Carb, 02-07 FL w/ Delphi EFI	0206-2059
2001-2012 FXST Softail, 2004-2012 Dyna	0206-2059
2008-2012 FL	0206-2060
1993-2006 Twin Cam w/ S&S E/G Carb	0206-2062

For questions pertaining to the installation of this product, please contact the Performance Machine technical department at 1-800-479-4037. This product is manufactured in the USA by Performance Machine LLC.

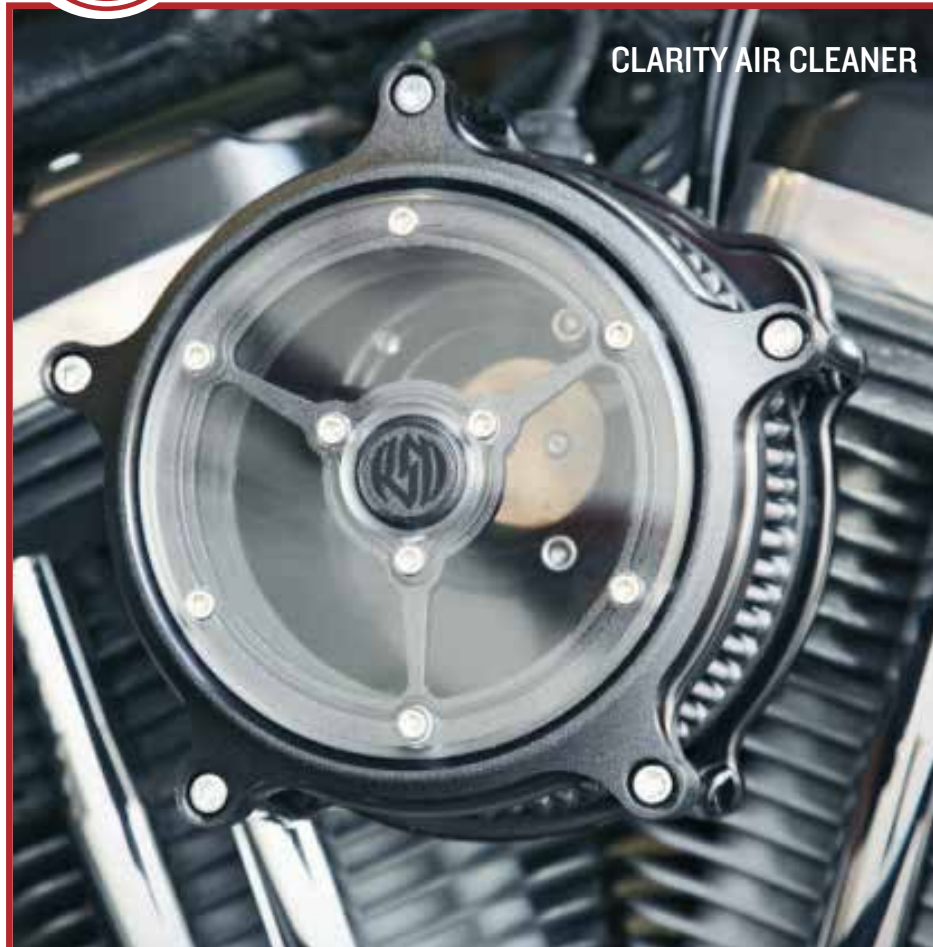


Caution:

The Clarity Window is preinstalled at the factory and should not be removed or serviced. If removal is necessary contact the tech department for special service instructions.



ITEM NO.	PART NUMBER	DESCRIPTION	QTY.
1	0073-0047	O-RING 4-1/2 ID X 4-5/8 OD X 1/16, VITON	1
2	0073-0048	O-RING 1-5/8 ID X 1-3/4 OD X 1/16, VITON	1
3	0101-1008	SHCS 1/4-20 X 3/4	3
4	0101-1038	SHCS 1/4-20 X 2-1/2	5
5	0101-9033	SHCS LOW HEAD 8-32 X 1/2	9
6	0116-0007 - ONLY 0206-2059 & 0206-2062	THREADED INSERT, 3/8-16 TO 1/2-13, 1/2" LENGTH	2
7	0206-0002/0010/0013/0030	BACKING PLATE, VENTURI AIR CLEANER, 93-06 BT, 01-07 ST, 04-07 DYNA	1
8	0206-0003/0011/0014	SECONDARY PLATE, VENTURI AIR CLEANER	1
9	0206-0004/0015/0031	BREATHER STANDOFF, VENTURI AIR CLEANER	2
10	0206-0006M/0012M/0016	BREATHER HEX BOLT 3/8-16 X 2-1/4 GRADE 5 CLEAR ZINC	2
11	0206-0008	AIR BOX SPACER, VENTURI AIR CLEANER	5
12	0206-0009	FOAM SPACER, VENTURI AIR CLEANER	1
13	0206-0018/0020	OIL TUBE - RIGHT	1
14	0206-0019/0021	OIL TUBE - LEFT	1
15	0206-0038/0039/0040	GASKET	1
16	0206-0083	OUTER PLATE, RSD CLARITY AIR CLEANER	1
17	0206-0084	AIR FILTER OPEN FRONT, K&N	1
18	0206-0086	COVER WINDOW, RSD CLARITY AIR CLEANER	1



CLARITY AIR CLEANER

For Fuel injected models, you must recalibrate the ECM or buy an aftermarket fuelpack from Vance & Hines to properly calibrate your new intake. Failure to do so may result in engine damage.

NOTE: Upon assembly use blue 243 loctite on all fasteners.

1. Turn your motorcycle off. Extinguish all cigarettes and open flames.
2. Remove existing air cleaner and breathers. (Refer to HD owners Manual)
3. Install 2 breathers (14) and backing plate (12) with 2 breather bolts (15) using blue loctite 243, torque to 15 ft. lbs.



4. Align the backing plate (12) with the breather bolts (15) then install the three 1/4-20 bolts (7) and gasket (16) and torque to 8 ft-lbs. Note: Aligning the breather bolts with the backing plate will allow easier installation and function of the rubber breather tubes (20 & 21).
5. Install the rubber breather tubes (20 & 21) into the recesses and make sure they form a good seal around the breather bolt head.
6. Install the secondary plate (13).
7. Install the front Clarity face plate as an assembly with the five spacers (10) using five 1/4-20 x 2.5" bolts (8) to the backing plate (12) and torque to 8 ft-lbs.
8. Recalibrate ECM to the supplied values from you exhaust manufacturer.
9. Fire that hot rod up and go do some laps.

Caution:
The Clarity Window is preinstalled at the factory and should not be removed or serviced.

CAUTION !!! - INTENDED FOR OFF HIGHWAY USE ONLY. DOES NOT COMPLY WITH EMISSIONS REGULATIONS

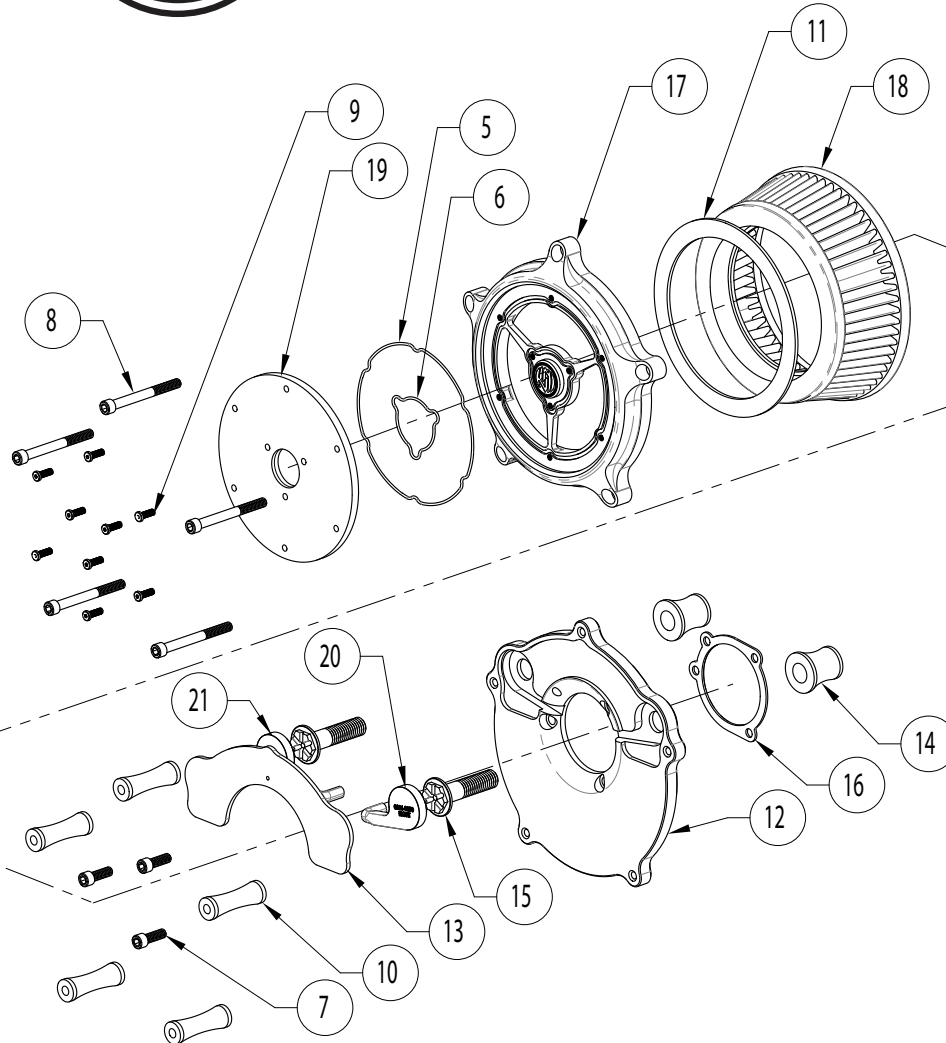
PRODUCT DESCRIPTION

1991-2012 XL SPORTSTER, DOES NOT FIT XRI200R MODELS

0206-2061



Clarity Air Cleaner



Caution:
The Clarity Window is preinstalled at the factory and should not be removed or serviced.

ITEM NO.	PART NUMBER	DESCRIPTION	QTY
5	0073-0053	O-RING 4-1/4 ID X 4-3/8 OD X 1/16, VITON	1
6	0073-0048	O-RING 1-5/8 ID X 1-3/4 OD X 1/16, VITON	1
7	0101-1008	SHCS 1/4-20 X 3/4	3
8	0101-1038	SHCS 1/4-20 X 2-1/2	5
9	0101-9034-SS	SHCS LOW HEAD 8-32 X 1/2 W/VIBRA-TITE	9
10	0206-0008	AIR BOX SPACER, VENTURI AIR CLEANER	5
11	0206-0009	FOAM SPACER, VENTURI AIR CLEANER	1
12	0206-0013	BACKING PLATE, 91-UP XL SPORTSTER	1
13	0206-0014	SECONDARY FILLER PLATE, 91-UP XL SPORTSTER	1
14	0206-0015	BREATHER STANDOFF, 91-UP XL SPORTSTER	2
15	0206-0093	BREATHER HEX BOLT, 1/2-13 X 2" GRADE 5 CLEAR ZINC	2
16	0206-0039	GASKET B-29059-88-062, 93-06 BT, 01-07 ST, 04-10 DYNA	1
17	0206-0083	OUTER PLATE, RSD CLARITY AIR CLEANER	1
18	0206-0084	AIR FILTER OPEN FRONT, K&N	1
19	0206-0086	COVER WINDOW, RSD CLARITY AIR CLEANER	1
20	0206-0090	OIL TUBE - LEFT	1
21	0206-0089	OIL TUBE - RIGHT	1

CAUTION !!! - INTENDED FOR OFF HIGHWAY USE ONLY. DOES NOT COMPLY WITH EMISSIONS REGULATIONS

For questions pertaining to the installation of this product, please contact the Performance Machine technical department at 1-800-479-4037. This product is manufactured in the USA by Performance Machine LLC.