



CUSTOM CHROME

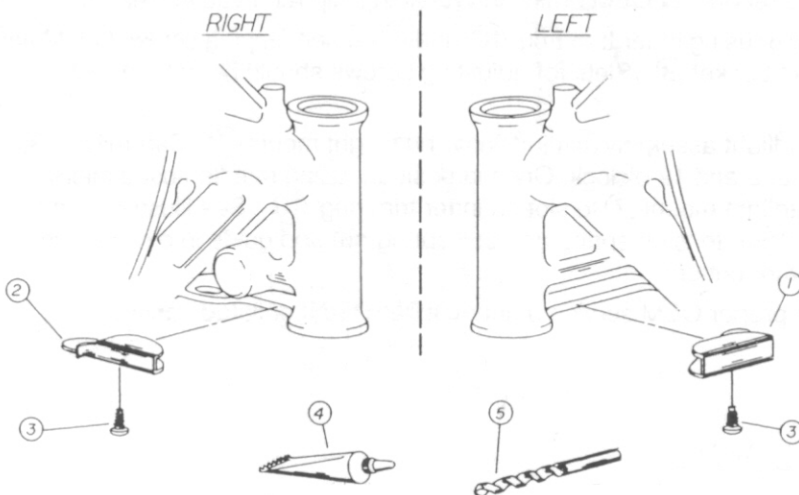
Instructions

Rick Doss FL Style Headlight Housing and Fork Cover Kit for FLSTs and Fatboy Models 1986 to present CCI #26-890

- Note:
1. Read thru instructions before beginning.
 2. Use blue Loctite (CCI #35-007) on first three threads of all hardware.

CAUTION: WHEN INSTALLING THIS KIT TO CYCLES EQUIPPED WITH 5 GALLON TANKS, INSTALL CCI #09-138 FORK STOP KIT INCLUDED PER INSTRUCTIONS, BEFORE REINSTALLING FORK COVER.

1. Disconnect negative battery cable from battery.
2. Using suitable cycle lift or jack, raise the front of the motorcycle high enough to remove the front wheel and fork tubes.
3. Remove two bolts securing the brake caliper to fork leg. Slide the caliper off the mounts and disc, and secure it clear of the fender with a cable tie or bungee cord. Do not disconnect brake line from caliper.
4. Remove axle and front wheel per applicable service manual. (Note: Heritage models may require tire deflation to clear the fender).
5. Remove front fender, unplugging light wire if equipped.
6. Remove existing headlight from bucket and disconnect plug.
7. Cut high and low beam wires approximately 3" from the socket. Cut ground wire leaving as much wire with the socket as possible.
8. Remove the existing headlight mount and housing by removing the single bottom bolt thru the lower fork clamp.
9. Remove the existing front, left and right tins. On Heritage models, disconnect the spotlight switch and remove the spotlight and signal bar. Carefully rest the bar on the fork legs.
10. On Heritage models, remove the turn signals from the light bar mounts and secure them out of the way. Unplug the spotlight wires from the connector block between the fork clamps and remove the spotlights and signal mounts from the light bar. Retain all hardware, lamps and mounts.
11. Lay a thick, soft blanket over the fuel tanks for paint protection.
12. Remove the handlebars, controls and clamp as a unit by removing the two nuts under the upper fork clamp. Carefully lay the entire unit on the covered fuel tanks.
13. Remove the fork tubes and sliders one side at a time by removing the top cap and loosening the pinch bolt. Carefully slide the tube out of the clamps and set aside.
14. Remove the existing fork covers.
15. Install the adapter brackets ① on each side of the fork clamps as shown, using the flat head screws (A) in the bottom countersunk holes. Make sure that the upper bolt holes are aligned by starting a buttonhead screw (B) loosely into each upper hole. Tighten the flat head screws (A) securely.
16. When installing to cycles equipped with 5 gallon tanks, install #09-138 extended fork stops as follows.



BILL OF MATERIAL P/N 09-138 EXTENDED FORK STOPS

| NO. | QTY. | DESCRIPTION |
|-----|------|---------------------------------|
| 1 | 1 | LEFT FORK STOP |
| 2 | 1 | RIGHT FORK STOP |
| 3 | 2 | #8-32 X 1/4" SELF TAPPING SCREW |
| 4 | 1 | GLUE (1/4" DB) |
| 5 | 1 | #25 (.150 DIA.) DRILL BIT |

Installation instructions for Fork Neck Protectors

CCI #09-138 Extended

Note: These protectors may be installed without removing the front fork assembly.

1. Slide protectors ① and ② into place on the fork neck as shown. The short protector must be installed on the right or fork lock side with the tab pushed all the way back against the fork lock boss.

2. Check to be sure that the holes in the bottom of the protectors are accessible behind the lower fork clamp and also that the fork lock hole is not obstructed.

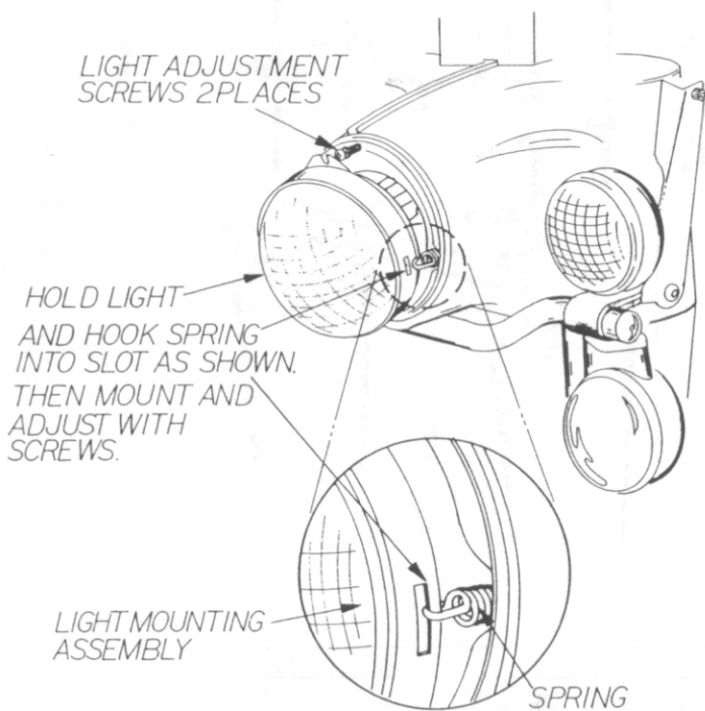
Note: This clearance can be increased by turning the front fork slightly to the left or right. It is suggested to either remove or cover the front fender to protect it while performing this operation.

3. Mark and center punch the hole locations through the fork protectors, and remove the fork protectors.

CCI #40-907
Revised 3/4/96

4. Mark the supplied drill bit (5) with a piece of masking tape 1/4" from the cutting end. Use this as a gauge to drill the holes to this proper depth
 5. Apply silicone (4) to the inside of both neck protectors and slide protectors onto drilled fork neck, aligning holes.
 6. Secure protectors with self tapping screws (3), using blue Loctite (CCI #35-007) on threads of screws. Tighten securely.
 7. Wipe off any excess silicone and allow to dry before riding.
-
17. Install the left and right fork covers (5) and (6) with the seams to the rear. Secure using sockethead screws (E), lockwashers (F), and flatwashers (H). Double check tightness.
 18. Remove screw holding brake line clamp to the lower triple clamp. Save hardware.
 19. Slide fork tubes back up into top clamp. The fork tube tops must be aligned with the wrench flats to the left and right (9 and 3 o'clock position) for proper bolt clearance to light bar bolts (see illustration #2). Tighten top caps securely. Torque pinch bolts in lower clamp to 30-35 ft. lbs.
 20. Reinstall handlebar unit to upper clamp and torque to 78 ft. lbs.
 21. Reconnect the light socket to the wiring harness using the quick connectors (13) provided on the high and low beam wires, and the ring connector (14) on the ground lead.
- Note: Heritage models will require a 1/2" diameter hole in the back of the left headlamp housing for the spotlight switch. Use masking tape at drilling location to prevent damage to chrome (see illustration #9). Reference illustration and instruction sheet included with #26899. Install switch and tighten securely.**
22. Remove the upper screws (B) installed in step (14) and install the headlamp housing halves (2) as shown using buttonhead screws (B) and washers (G). Right side headlight housing will need to have hole drilled in it at this time to utilize one of the OEM brake line clips (see illustration #9). Locate desired position and mark with masking tape to protect chrome. Drill a 1/16" diameter hole very carefully. Then enlarge hole to 1/4" diameter with second drilling operation. Slowly remove masking tape and deburr hole. Reinstall right side housing now.
- Note: On Heritage models, the light bracket kit (CCI #26-899) should be installed at this time, using longer bolt and spacer at the top. Reference illustration and instruction sheet included with #26899. Tighten securely. Install spotlights and turn signals using clamp and existing hardware. Plug spotlight into harness and connect switch.**
23. Install headlight mount (7) with adjusting screws at 12 o'clock and 9 o'clock, using seven sockethead screws (C). Pull the headlight socket thru the center of the mount and connect the ground ring terminal to the bottom screw (C). Tighten all screws securely. If all seven screws do not easily align with holes in headlight housings, you may have to loosen four bolts (B) holding housings to triple trees. Retighten bolts after seven screws are installed. Make sure long adjusting screw is at 12 o'clock position and short adjusting screw is at 9 o'clock position. See illustration #1.
 24. Install the top clamp cover (3) using the two buttonhead screws (D). Tighten securely. Install lower cover (4) onto lower triple tree using bolt (D), washer (H). Make sure to reconnect OEM brake line retaining clip removed in step (18).
 25. Install existing seal beam (9) into headlight bucket (8) using inner trim ring (10) and three self tapping screws (1). Make sure seal beam is correctly indexed up and down in bucket (8). Slots for adjusting screws should be at 9 and 12 o'clock.
 26. Connect headlight socket to seal beam. Install headlight assembly (8)(9)(10) into headlight mount (7). Carefully slide adjusting screws into slots on headlight bucket (8) at 9 and 12 o'clock. Once in position, using needle nosed pliers, connect tension spring at 4 o'clock position on headlight mount (7) to slot on inner trim ring (10). See illustration #3. If suitable pliers are not available, attach tie-wrap (16) to tension spring and pull spring out and guide into slot in trim ring (10). Cut tie-wrap off of spring using knife or wire cutters.
 27. Reinstall front fender, wheel and brake caliper per proper OEM service manual. Inflate tire if deflated earlier.

28. **CAUTION:** CAREFULLY TURN FORKS FROM FULL LEFT TO FULL RIGHT AND CHECK FOR CLEARANCE BETWEEN TANKS AND TURN SIGNALS AND ALUMINUM HEADLIGHT HOUSINGS.
29. **CAUTION:** CAREFULLY LOWER BIKE OFF OF LIFT OR JACK AND GENTLY PLACE FRONT WHEEL ON GROUND. FORK SLIDER COVERS ⑤ AND ⑥ MUST NOW BE CHECKED FOR PROPER ALIGNMENT. MISALIGNMENT MAY CAUSE SLIDER COVERS TO SCRAPE FENDERS OR FORK SLIDERS. PLACE STRAIGHT EDGE ALONG INSIDE OF FORK SLIDER COVER PER ILLUSTRATION #4 AND MAKE SURE IT IS CENTERED BETWEEN FENDER AND FORK SLIDER. FORK SLIDER COVERS CAN BE ADJUSTED INWARD OR OUTWARD BY FIRMLY TAPPING WITH THE OPEN PALM OF YOUR HAND. COMPRESS FORKS FULLY TO CONFIRM PROPER ALIGNMENT OF SLIDER COVERS.
30. Align headlight per service manual specs by turning adjusters screw in or out to focus seal beam.
31. Install outer trim ring ⑪ onto headlight mount ⑦. See illustration #5 and #6. Make sure all retaining clips are in correct location. Mounting screw hole must be at 6 o'clock position and retaining ring at 12 o'clock must have clip facing outward towards headlight mount ⑦. This clip slips into slot on top of headlight mount ⑦. Push bottom of ring towards rear of bike until it snaps into place. You may need to guide lower rubber seal retaining clip past headlight retaining ring ⑩ using flat screwdriver. Install retaining screw through trim ring ① and into retaining clip at 6 o'clock position on headlight mount ⑦. See illustrations #7 and #8.
32. Secure clutch cable and brake line to handlebar using tie-wraps ⑯ if needed. Install one of the OEM brake line retaining clips in 1/4" hole drilled earlier in step 22. Remove other OEM clip.
33. Check tank and wire harness clearance to new aluminum headlight housing by carefully turning forks full left to full right. If needed tie harness to frame to keep clear of aluminum housing.
34. Test headlamp hi-lo beam, turn signals and spotlights. Make sure all are functioning properly.
35. Test brakes carefully at low speeds before driving on open roads.



SPRING INSTALLATION TIP

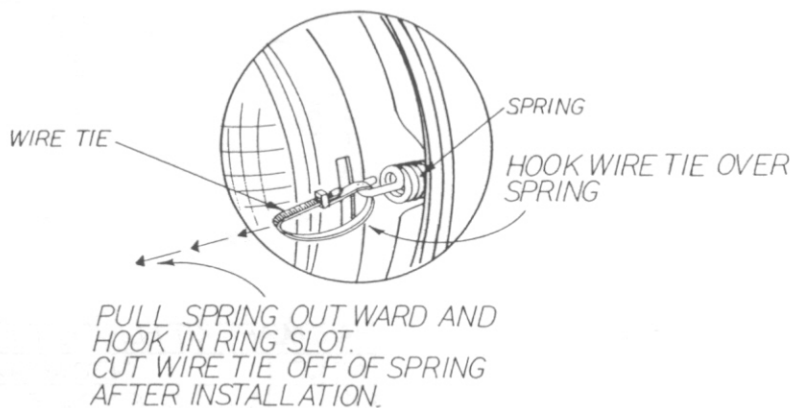


ILLUSTRATION #3

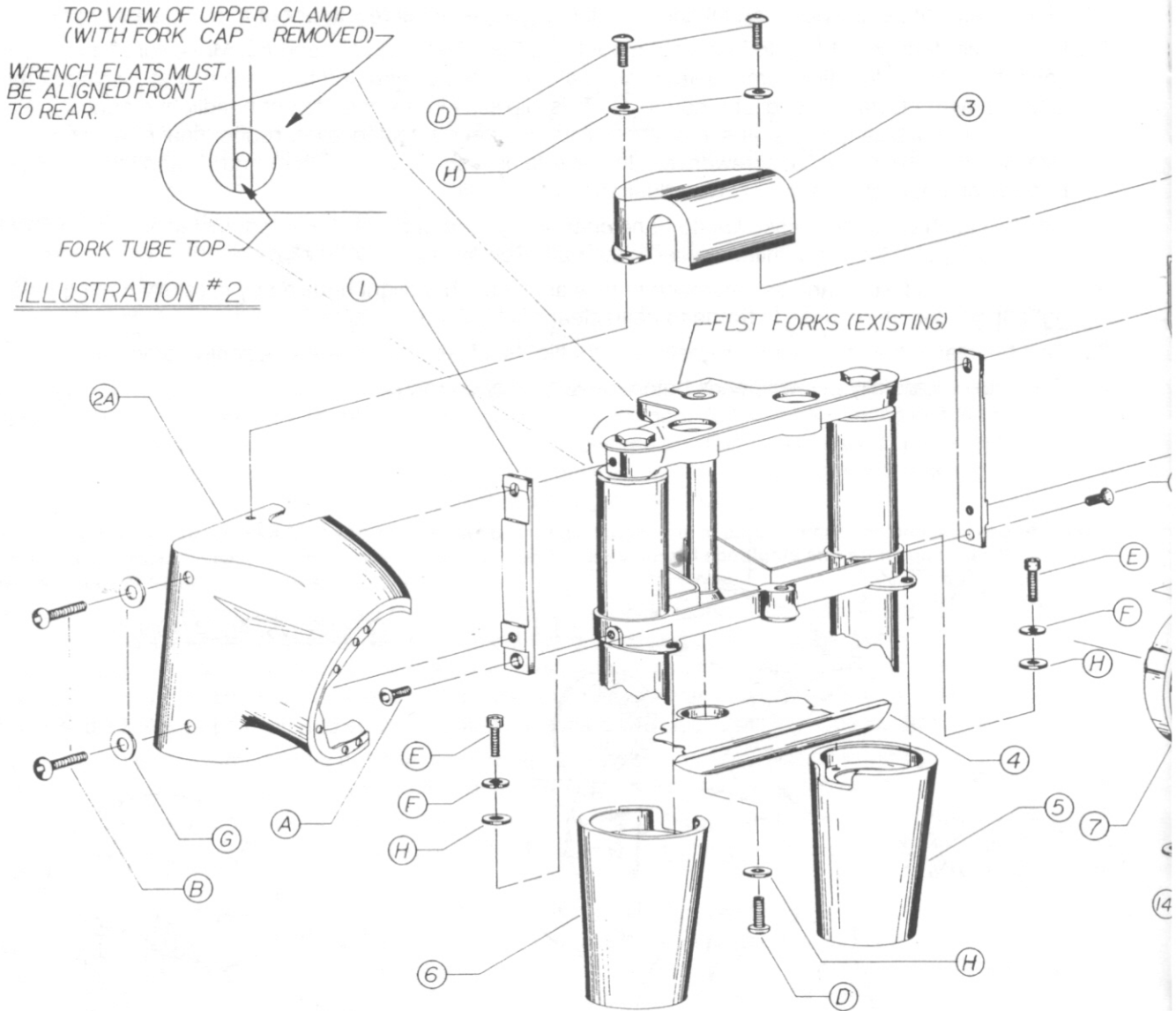


CUSTOM CHROME

Instructions

Copyright © 1996 Custom Chrome, Inc.

ALL HARDWARE IS CONTAINED IN HARDWARE KIT, P/N 2H28, ITEM 12, AND INDICATED



HARDWARE KIT FLH/FLST FORK COVER

| NO | QTY | DESCRIPTION | PART NO. |
|----|-----|---|----------|
| A | 2 | 5/16-24X .62LONG FLATHEAD SOCKET SCREW | 32-330 |
| B | 4 | 5/16-24X 3/4"LONG BUTTON HEAD SOCKET SCREW | 32-331 |
| C | 7 | 10-24X 1/2"LONG SOCKET HEAD SCREW | 32-332 |
| D | 3 | 1/4-20X 3/4 LONG BUTTON HEAD SOCKET SCREW | 32-309 |
| E | 4 | 1/4-28X 5/8 LONG SOCKET HEAD SCREW | 32-337 |
| F | 4 | 1/4" LOCK WASHER | 32-330 |
| G | 4 | 5/16" FLAT WASHER | 09-585 |
| H | 7 | 1/4" FLAT WASHER (.620.D. X .281.D. X .08 THK) | 32-336 |
| I | 3 | 8-32 X 1/4" LONG SELF TAPPING SCREWS (PHILLIPS) | 32-337 |

Rick Doss FL Style Headlight Housing and Fork Cover Kit for FLST's and Fatboy models 1986 to present CCI #26-890

BILL OF MATERIAL P/N 26-890
FLH STYLE FORK COVERS FOR FLST.

| NO. | QTY | DESCRIPTION | PART NO. |
|-----|-----|---|----------|
| 1 | 2 | BRACKET | 26-892 |
| 2 | 1 | FL HEADLAMP HOUSING | 26-536 |
| 3 | 1 | RISER COVER | 26-895 |
| 4 | 1 | BOTTOM COVER | 26-896 |
| 5 | 1 | LEFT FORK COVER | 26-898 |
| 6 | 1 | RIGHT FORK COVER | 26-897 |
| 7 | 1 | HEADLIGHT MOUNT WITH ADJUSTERS | 26-893 |
| 8 | 1 | HEADLIGHT BUCKET | 26-894 |
| 9 | 1 | HEADLAMP (EXISTING) | |
| 10 | 1 | INNER TRIM RING | 26-526 |
| 11 | 1 | OUTER TRIM RING (WITH SCREWS, CLIPS, RUBBER) | 26-535 |
| 12 | 1 | HARDWARE KIT | 2H28 |
| 13 | 2 | 22-18 GAUGE KRIMP CONNECTOR | 32-340 |
| 14 | 1 | #10 X 22-18 GAUGE RING TERMINAL | 32-341 |
| 15 | 1 | INSTRUCTION SHEET | 26-890I |
| 16 | 3 | CABLE TIE | 12-420 |
| 17 | 1 | EXTENDED FORK STOP | 09-138 |
| 18 | 1 | HEAD LIGHT ADJUSTER SCREW (1 SET SHORT, LONG) | 32-342 |

BY LETTERED CALL-OUTS.

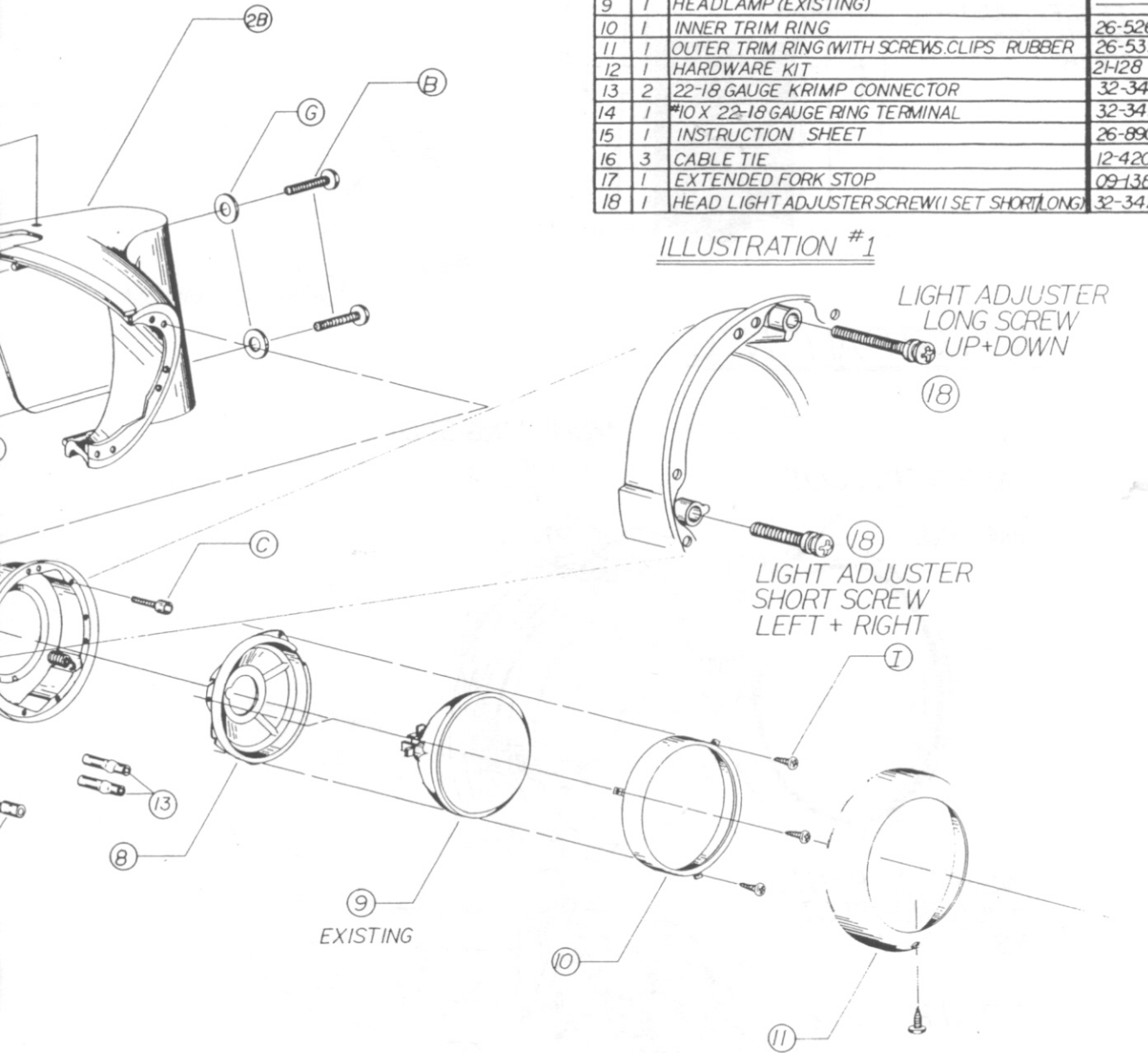


ILLUSTRATION #1

LIGHT ADJUSTER
LONG SCREW
UP+DOWN

LIGHT ADJUSTER
SHORT SCREW
LEFT + RIGHT

EXISTING

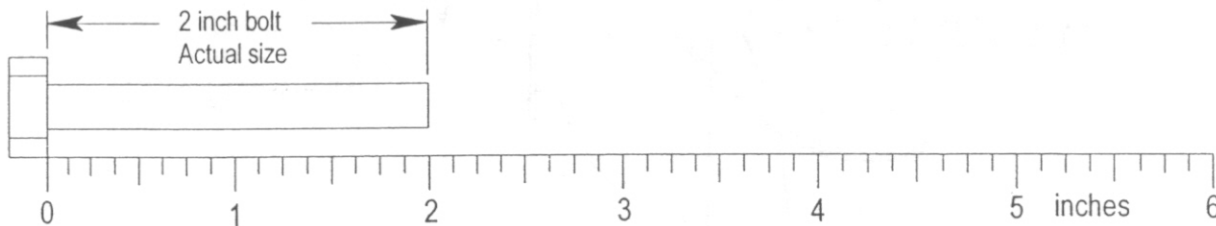


ILLUSTRATION #4

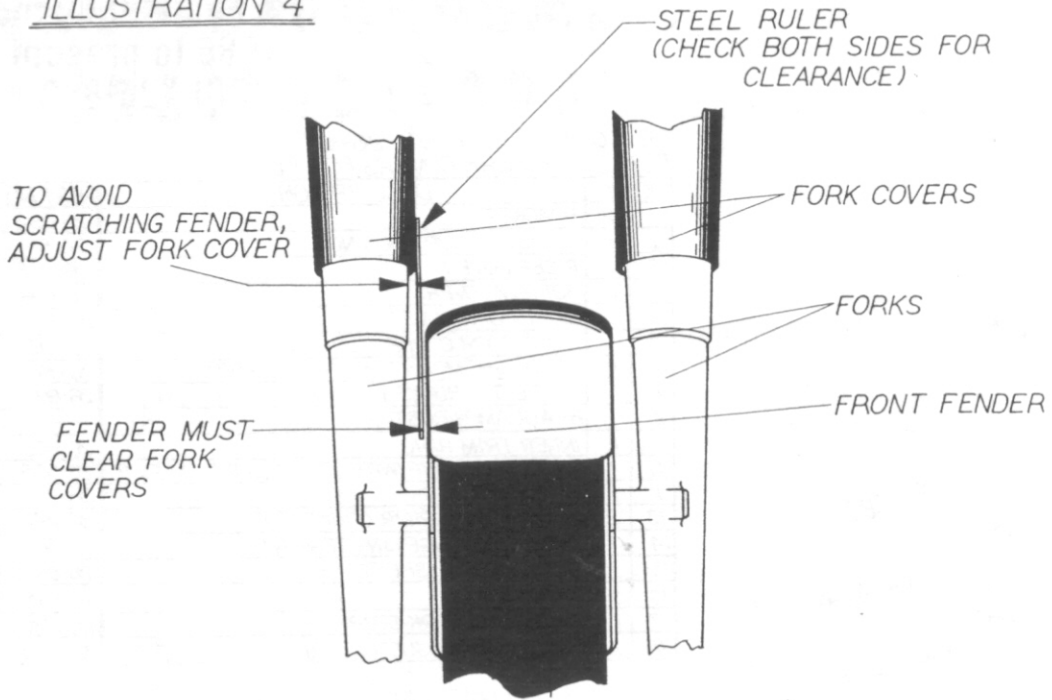
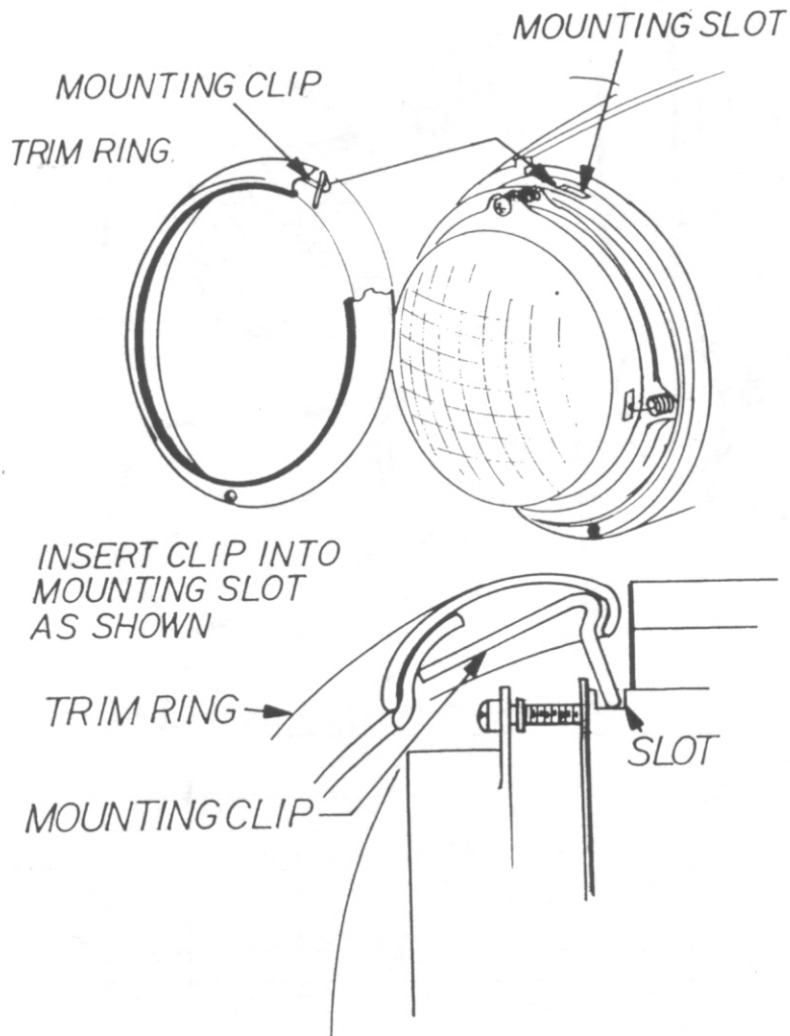


ILLUSTRATION #6



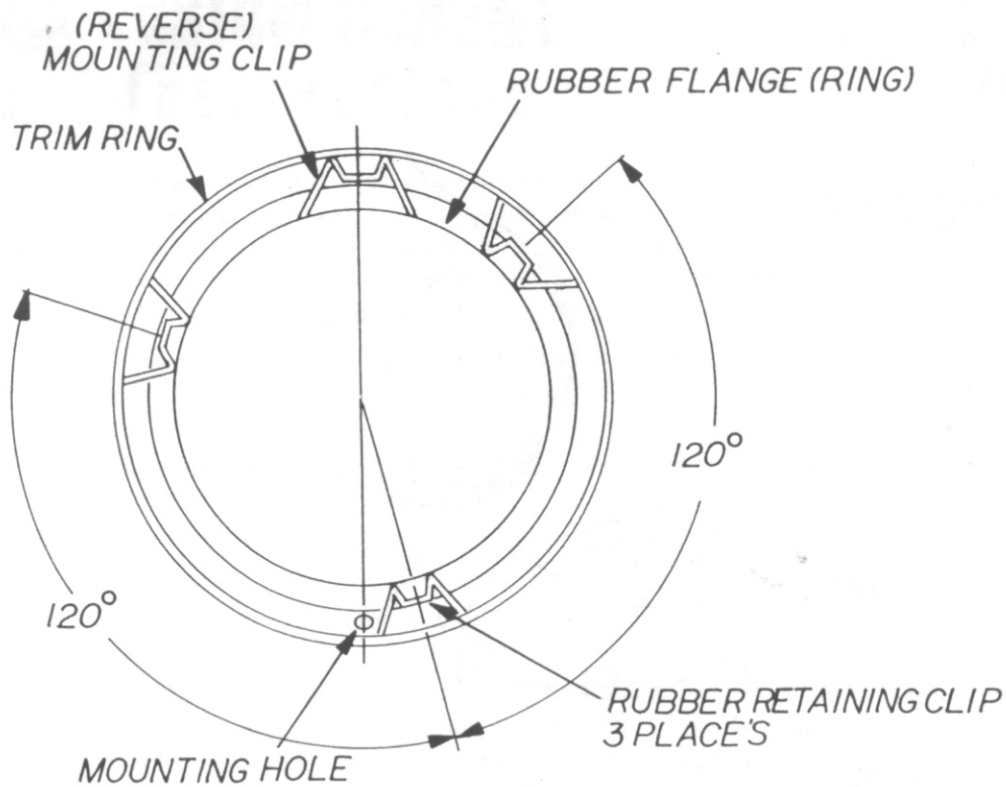


ILLUSTRATION #5

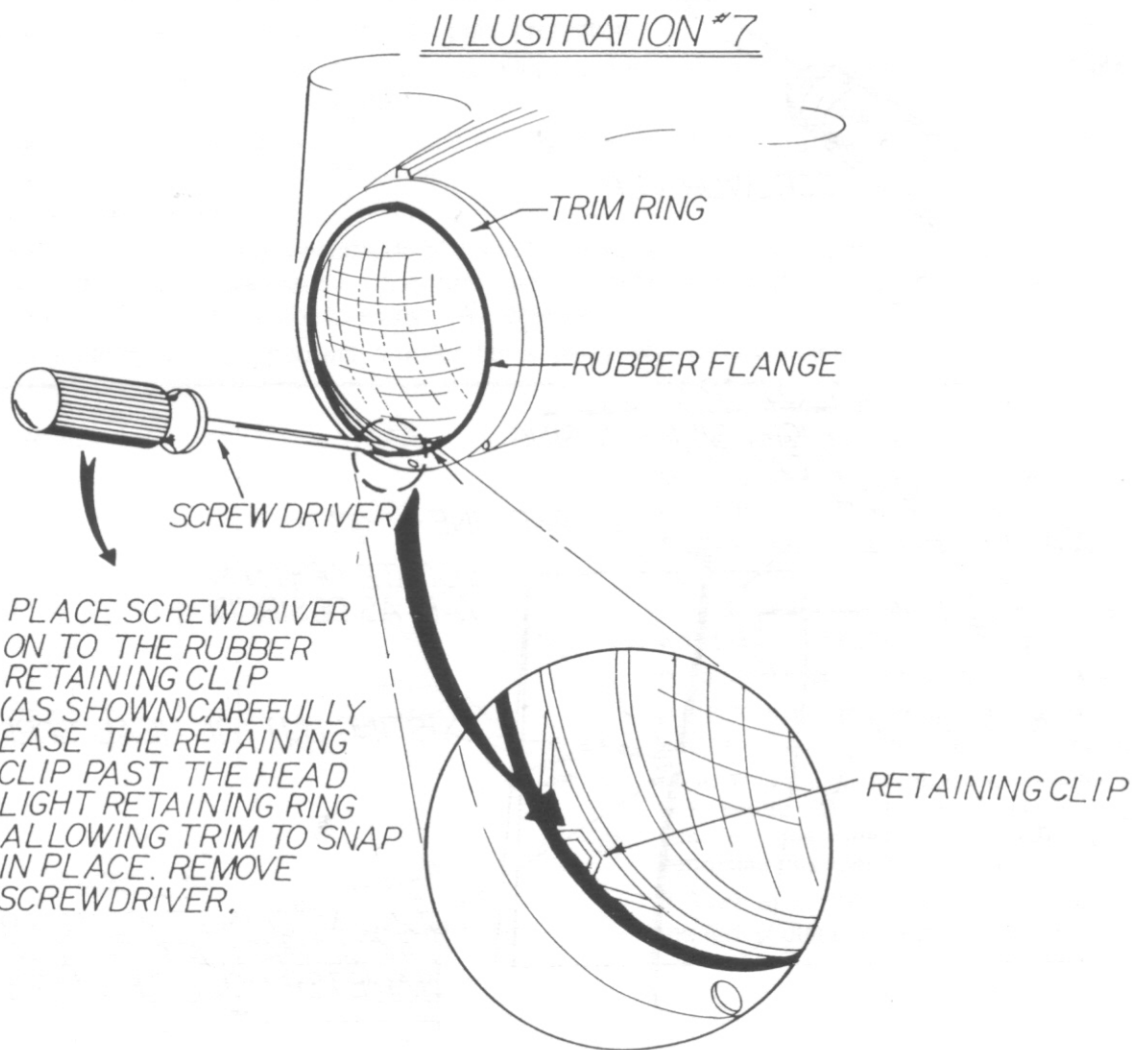


ILLUSTRATION #8

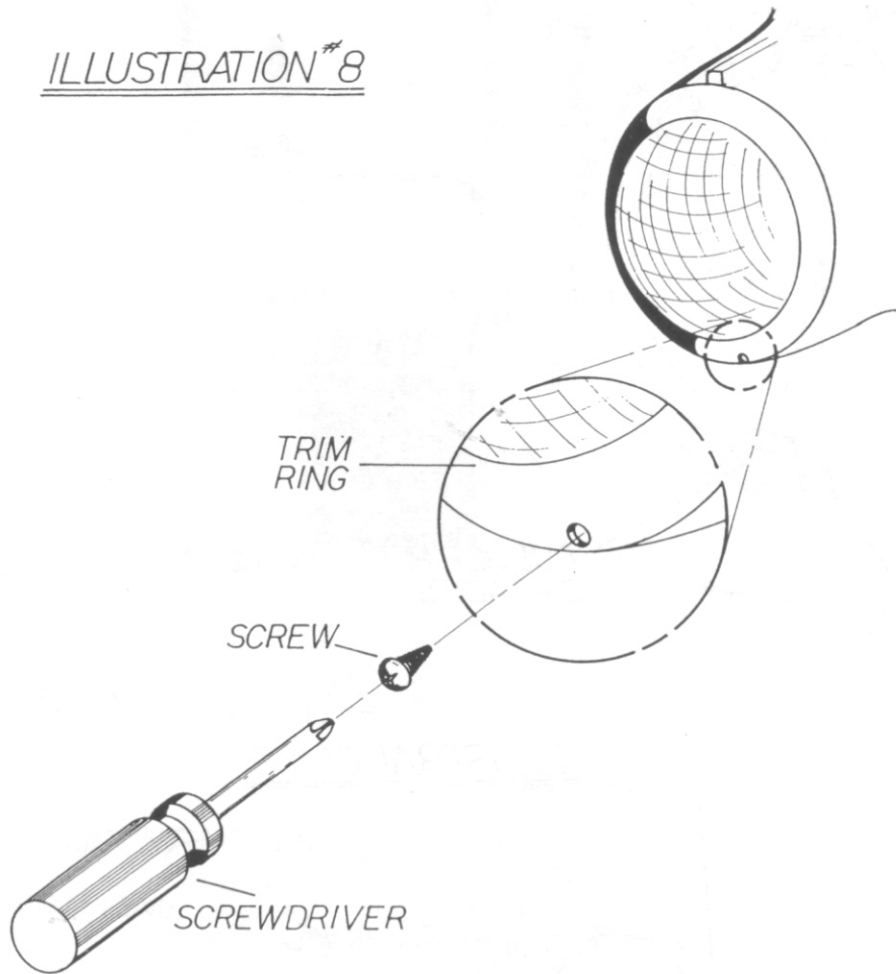


ILLUSTRATION 9
RIGHT SIDE HOUSING
(REAR VIEW)

